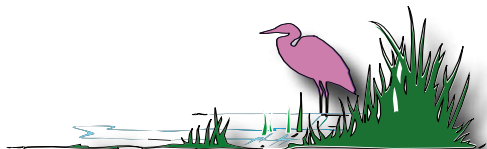


# FLOREX 2011

## Project Mercury 1961 - 2011



Brought to you by the  
**Florida Stamp Dealers' Association**  
and the  
**Central Florida Stamp Club**



# SELLING YOUR COLLECTION?

*We offer these advantages  
by selling through our public auction*

- Prompt appraisals
- Low commission rates
- Final settlement made 45 days after the sale
- Describers with expertise in both U.S. & Worldwide stamps and covers
- Maximum exposure for your material using our worldwide list and the Internet
- We are willing to buy your collection outright
- We will travel for important properties

*See Us at Booths 5-6*

## Rasdale Stamp Company

*Family Owned and Operated Since 1932*

35 Chestnut Ave • Westmont, Illinois 60559-1127

Phone 630-794-9900 • Fax 630-794-9958

e-mail [info@RasdaleStamps.com](mailto:info@RasdaleStamps.com) • [www.RasdaleStamps.com](http://www.RasdaleStamps.com)



# Table of Contents

- Welcome Letter from the President of the Florida Stamp Dealers' Association
- Welcome Letter from the Vice President of the Central Florida Stamp Club
- Welcome Letter from the General Chairman of FLOREX
- Mercury History
- Schedule of Show Events
- List of Dealers' Specialties (in name order)
- FLOREX Website Information
- List of Dealers in Booth Order
- Show Booth Layout
- Events Listing
- Exhibitor Prospectus for 2011
- APS Judges/Medals/Future FLOREX Dates
- Exhibit Frame list for 2011



## FLOREX

### **General Chairman**

Francis Ferguson

### **Assistant to the**

### **General Chairman**

Robert Dowrick

### **Exhibit Chairman**

Robert Fisher

### **Assistant to the**

### **Exhibit Chairman**

Newton Kulp

### **Registration - Proofing**

Ann Dowrick

### **Security Chairman**

Phillip E. Fettig

### **Youth Coordinator**

Randall Priest

### **Editor**

Francis Ferguson

## FSDA

### **President**

Sheldon Rogg

### **Vice President**

Gary Hausin

### **Secretary**

Lucy Bricker

### **Treasurer**

Francis Ferguson

### **Board of Directors**

Sy Bricker

Peter Dearing

Randy Savedow

### **Immediate Past Pres.**

Earl T. Reeder

## CFSC

### **President**

Francis Ferguson

### **Vice President-Prgs**

A. Stephen Patrick

### **Vice President-Ops**

Robert Dowrick

### **Secretary**

Josh Furman

### **Treasurer**

Jim Archbold

### **Board of Directors**

Phillip E. Fettig

Randall Priest



Welcome to FLOREX 2011.

I know you will enjoy browsing through our show dealers' wide range of philatelic material and trust you will be able to add to your collections.

For your additional enjoyment we have approximately 180 exhibit frames of material covering a wide range of subjects. FLOREX, as a World Series of Philately show, has the benefit of judges from the American Philatelic Society performing the duty of determining the award levels. As you take the time to view the exhibits, acknowledge the judges and the other volunteers who make this all happen.

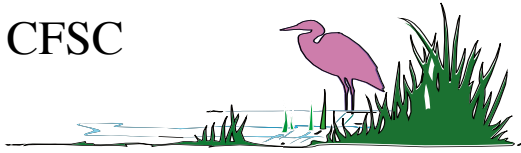
Junior collectors are welcome to visit the Youth Area which is staffed by volunteers from the Central Florida Stamp Club. There is a mound of stamps to dig through -- who knows what treasure you may find!

Also, I would like to acknowledge and thank the membership of the Central Florida Stamp Club who volunteer their time and energy to make FLOREX one of the premier shows in the United States.

Enjoy the show and we hope to see you in Central Florida for many more years to come!

Sheldon Rogg  
FSDA President 2008-2012

# CFSC



Dear FLOREX Guests,

The Central Florida Stamp Club welcomes you to FLOREX 2011. We have been honored to host this show since 1986 and we trust the 2011 Silver Anniversary edition will be a great success. How does one measure that success?

The dealers gain new customers, as well as profit, based on their material and long preparation for these three days. Please appreciate the free admission that comes from their table fees.

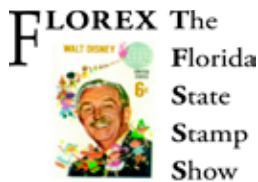
The exhibitors enjoy the appreciation and awards for publically showing their stamps that they have carefully acquired and now share at personal expense. The enjoyment you show as you study their best efforts is appreciated. And give a “Big Thank You” to the judges who travel at extra expense to lend their expertise for the betterment of the hobby.

The children, as future collectors, can get goodies at the youth booth and learn more about our great hobby.

And you, the patrons from near or far, hopefully you will find the treasures you seek and return home to add them to your collections and then look forward to the next chance to see, buy, and learn.

We volunteers wish you a great show and a safe trip home.

A. Stephen Patrick  
Vice President, Central Florida Stamp Club



Welcome to FLOREX 2011.

Come one -- Come all!

This show is the largest WSP event in the southeastern United States.

This year we have 49 dealers occupying 63 booths with a wide range of material to meet anyone's desires. Take the time to browse through the extensive stock of material to find that one treasure that has eluded you for years.

I would like to extend a hearty "Thank You" to all the volunteers from the Central Florida Stamp Club. Without this pool of dedicated individuals things simply would not get done. As you interact with these valued helpers, acknowledge them with a smile and a thank you.

Enjoy the show -- and should you have any questions or concerns, please feel free to stop me and chat.

Yours Sincerely,

Francis Ferguson  
General Chairman, FLOREX

**THANK YOU FOR COMING**

**WE HOPE TO SEE YOU AT  
FLOREX 2012**

**FLOREXStampShow.com**

# The Proud Sponsor of FLOREX



*Florida Stamp Dealers' Association*



**Celebrating 51 years of service to the philatelic community.  
1960 - 2011**

## Central Florida Stamp Club

Meetings 1<sup>st</sup> and 3<sup>rd</sup> Thursday of the month.

TIME: 6:30 pm to 8:30 pm

PLACE: Marks Street Senior Recreational Complex  
99 East Marks Street  
Orlando, FL 32803

More Info: [www.CentralFloridaStampClub.org](http://www.CentralFloridaStampClub.org)



# The Mercury Project

by The Editor

**Long before the magic of Disney landed in Central Florida, there was Cape Canaveral. While Disney has touched many aspects of social/pop culture, the advances required to place a man in space -- and on the moon, drove a quantum change in technology. Many of the “new/better things” that can be tied directly to the space program can be found in common use today. Cordless power tools, Velcro, smoke detectors, home insulation, body imaging, advanced optics, and even laser beams have their antecedent in the technology developed either directly or indirectly for the space program.**

**The age of space in Central Florida began with the first rocket launch from the Cape with the Bumper 8 from Launch Complex 3 on July 24, 1950. In the following decades, Project Mercury, Gemini and Apollo all launched from Cape Canaveral. In the early 1980s the Space Shuttle breathed new life into the space program (and local economy) and continued until 2011. The Kennedy Space Center has been very much the portal to the frontiers of space.**

**The Mercury Project was like nothing attempted before; it broke new ground on nearly every launch as America struggled to claim superiority in the “final frontier.” Mercury launched 20 unmanned and six manned missions from 1959 to 1963, laying the foundation for Gemini and Apollo to follow.**

**The selection of the first seven astronauts by NASA on April 9, 1959 cemented these seven individuals in the annals of space history. The names Shepard, Grissom, Glenn, Carpenter, Schirra, Cooper, and Slayton became synonymous with daring adventure into the unknown depths of space – beyond our breathable atmosphere.**

**Fifty years later we acknowledge the accomplishments of the Mercury Seven and their adventurous nature for the betterment of mankind. We salute Alan B. Shepard, Jr. [B1923 - D1998] who became the first American in space on May 5<sup>th</sup>, 1961.**



## Paintings by Ann Pullin

FLOREX 2011 is honored to have four paintings by this wonderful artist, as the Grand, Reserve Grand, Single Frame & People's Choice awards.



A resident of Central Florida since 1977, Ann has spent time as a full time appraiser, earned a Master of Arts degree and is certified by three appraisal societies and is a GIA graduate gemologist.



Ann devotes her spare time to perfecting her technique in traditional oriental brushwork and exploring modern trends in the area.

### Contact Information:

Phone: 407.644.2156  
Website: [www.pullin.biz](http://www.pullin.biz)

## FRAMING OF CENTRAL FLORIDA, INC.

1820 N. Orange Ave., Orlando, FL 32804

(between New Hampshire and Princeton)

**407-894-8644**

**Custom Framing**

[FramingCentralFL@aol.com](mailto:FramingCentralFL@aol.com) • [www.framingofcentralflorida.com](http://www.framingofcentralflorida.com)

**Monday-Friday 9:30-5:30 • Saturday 10:00-3:00**

**"You Name It We Frame It"**

**Mike L. VanDerLeest**

**Rudy J. Wright**

# FLOREX <sup>WSP</sup> 2011

The Florida State Stamp Show -- December 2, 3 & 4

[Home](#)

[Auction !](#)

[Blog](#)

[Cachets](#)

[Contacts](#)

[Dealers](#)

[Directions](#)

[Events](#)

[Exhibits](#)

[Future](#)

[History](#)

[Hosted](#)

[Hotel](#)

[Hours](#)

[Layout](#)

[Pictures](#)

[Program](#)

[Show Flyer](#)

[Societies](#)

[Sponsor](#)

[Youth](#)

Since 2004 FLOREX has been on the World Wide Web. The site started slowly with very basic information. However, for the last six years, efforts have been focused on adding a depth of information. We have been able to locate a large amount of historical information that has been subsequently scanned and uploaded. This repository of information is a great resource to chart the history of FLOREX over the decades.

The site is kept current at all times with the most updated information available. Each of the buttons on the left connect to FLOREX related information. Take the time to visit the site and see what is there. You might be pleasantly surprised!

The FLOREX site is owned by the Florida Stamp Dealers' Association and is maintained by one of the members.

If you have any comments or concerns, please contact the webmaster at the e-mail address listed below.

***In particular we are looking for the show booklets from 1955, 1956, 1958, 1960, 1961, 1962, 1963, 1964 & 1967. Please contact the webmaster at your earliest convenience.***

**E-mail: [Show@FLOREXStampShow.com](mailto:Show@FLOREXStampShow.com)**

**Web: [www.FLOREXStampShow.com](http://www.FLOREXStampShow.com)**

## GPS Chapter 23

The Central Florida Chapter of the Germany Philatelic Society will host an informal meeting on Saturday, December 3, at 1:00 PM. All FLOREX attendees are most cordially welcome.

Enjoy an informative program, interesting philatelic material on display, and good fellowship.

### For Information Contact:

Tampa Bay Area  
Pritt Rebane  
727.812.1255  
pritt@rebane.com

Orlando Area  
Jim Pullin  
407.647.3479  
JRPullin77@cfl.rr.com

Leesburg Area  
Frank Hills  
352.748.4415  
fch@sum.net

Vero Beach Area  
Fred Meder  
772.562.6035  
FMeder1631@verizon.net

Meets on the 2nd Sunday of the month at  
2:00 p.m., September through May,  
at Grace Lutheran Church,  
745 S. Ingraham Ave., Lakeland, Florida.



## Florida Postal History Society



**Do you have an  
interest in Florida  
Postal History?**

**You found the right  
place!**

On our website you will find a wealth of information covering a wide selection of Florida history. Come and see what it is all about at the society meeting at noon on Saturday December 3rd during FLOREX 2011.

We will have our annual meeting at the Sarasota National Stamp Exhibition on Feb 3, 2012 at 12:00 pm.

All of our JOURNALS are on-line along with membership information and applications.

**Established  
1978**

**On the web at  
[www.FPHSonline.com](http://www.FPHSonline.com)**

# WANTED TO BUY

CLASSICS OF  
JAPAN, CHINA, KOREA  
THAILAND & ASIA  
STAMPS & COVERS

See Us In Booth 50

RISING SUN STAMPS

P.O. Box 716

Marshall's Creek, PA 18335-0716

e-mail: [haruyo\\_baker@msn.com](mailto:haruyo_baker@msn.com)

cell phone: 570-350-4393

**SEE US AT BOOTH #11**

- Quality U.S. Mint & Used from #1 through Back-of-Book
- All key items with PF or PSE Certificates • Private Vending

- Classic Canada with Greene Foundation Certificates
  - Canadian Semi-Official Airmail Stamps & Covers
- World's Deepest Stock —

**MARK-LANE STAMPS**

P.O. BOX 626 • WEST HAVERSTRAW, NY 10993

Tel/Fax (845) 362-5330 • E-mail: [RWS45@aol.com](mailto:RWS45@aol.com)



Want Lists • "Fair Dealing Since 1943"



APS • ASDA • CSDA • RPSC

# Learn More, Do More, Enjoy More with APS!

—America's Stamp Club—

## Join Today!

*and save  
more than \$50  
on APS Services*

Membership privileges include:

- Low-Cost Stamp Insurance
- Authoritative Expertizing Service
- Award-Winning Monthly Magazine
- Informative Website — [www.stamps.org](http://www.stamps.org)
- Nation's Largest Philatelic Research Library
- Secure Internet Sales — [www.StampStore.org](http://www.StampStore.org)
- Mail Sales Circuit Service • and much more!

To join online visit: **[www.stamps.org](http://www.stamps.org)**

*New members receive coupons for APS Services valued at more than \$50!*

To request membership information contact:

American Philatelic Society • 100 Match Factory Place, Dept. FS • Bellefonte, PA 16823  
Phone 814-933-3803 • Fax 814-933-6128 • E-mail: [info@stamps.org](mailto:info@stamps.org)



## COLLECTORS EXCHANGE

We are sorry to have missed  
you this year -- we will be  
back in 2012! -- John Latter



[www.BritishStampsAmerica.com](http://www.BritishStampsAmerica.com)

Serving the Philatelic  
Community Since 1980

Cell Phone  
407.620.0908

E-mail  
[colex4stamps@cfl.rr.com](mailto:colex4stamps@cfl.rr.com)

# FLOREX 2011 Dealer List

## A

- A&R Stamp 47 & 48  
US & World Wide Stamps, Disney & topical,  
Postal History, FDCs, Airpost, Naval Covers, Collections  
and Box Lots. Dime/Dollar.

## B

- BEJJCO of Florida, Inc. 42 & 43  
US & World Wide Stamps & Covers, US Plate Blocks  
& FDCs, Postal History, US Precancels, Back of Book.
- Blackjack Trading Company 23  
Confederate Stamps & Covers, US Stamps & Covers,  
Documents, Civil War Letters
- Bob & Marti's Stamps 7 & 8  
Classic & Modern US, PNCs & Coils, Sheets,  
Booklets, Foreign.
- Browse House 41  
Lots & Collections, Better US & World Wide Sets,  
Confederates, Bulk & Box Lots.

## C

- Castle Rock Stamps 14  
Latin America, Classics & New issues, Postal History.
- Classic Stamps & Covers 10  
US & World Wide Postal History, Topical Covers &  
Stamps, Specialized Covers, Zepps, etc. World Wide  
Stamp Lots.
- Court Street Stamp & Coin Shop 57 & 58  
British Empire, US, Asia, World, US FDCs,  
Post Cards.

# FLOREX 2011 Dealer List

## D

- Double J Stamps 54 & 55  
Supplies dealer, albums, mounts, stock books,  
tongs, sheet albums, cover albums, approval cards,  
UV lamps, watermark detectors, magnifiers,  
General US & Foreign material.
- Douglas Weisz U.S. Covers 35  
Postal History, First Day Covers, Postal Stationery,  
Flights & Events.

## E

- Earl T. Reeder 31  
US, Postal History, Revenues, Confederates.
- EdKen 18  
First Day Covers, Postal History, Stamps.
- Ed Petrik Stamps 9  
New Issues -- Foreign.

## F

- FA Stamps 15-16  
US, Japan, Asia.
- Frank Bachenheimer 3  
Quality US stamps, US Revenues & Possessions.

## H

- H & S Rogg 19  
US & World Wide Stamps & Covers, Israel Tabs,  
Kiloware Mixtures, Supplies & Appraisals.

## J

- Jacksonville Stamp & Coin 20 & 27  
Classic US, World Wide singles, FDCs. Dime/Dollar.

# FLOREX 2011 Dealer List

James F. Taff	13
Confederate States, German Areas, US & British Colonies, French areas, Collections.	
Joanne's Stamps (Robert Sazama)	49
Dime/Dollar	
<u><b>L</b></u>	
Labron Harris	21
US & World Wide Postal History	
<u><b>M</b></u>	
M.T.O. Stamps	34
US Used & Mint, Sheets, Booklets, Plate Blocks, Back of Book.	
Mark-Lane Stamps	11
US & Canada Mint/Used, Canadian semi-official Air Mails.	
Marshall's Stamps for Collectors	39
US & World Wide Stamps & Covers, Postcards, Historical Documents.	
Martin Farber	56
France & Colonies, Scandinavia, better World Wide.	
Michael	17
US Postal Cards & Stationery, US Mint & Used, Florida Postal History, US Revenues, Space.	
Michael Rogers, Inc	30
China, Asia & 10 Cent Stamps.	
Mountainside Stamps, Coin and Currency	28
US, British Commonwealth, Europe, Asia, US Plate Blocks & Booklets.	
<u><b>N</b></u>	
New England Stamp	44, 45 & 46
World Wide Stamps & Covers, US Stamps & Covers, Postal History Collections & Lots, Dollar Covers.	



# FLOREX 2011 Dealer List

Norman Hinds, Jr. Philatelics	61
German offices abroad, German Colonies, US Revenues & Stamps.	
<b><u>P</u></b>	
PSAG, Inc.	62
Expertizing, Classic US, Back of Book.	
P. Schwender	2
World Wide Stamps,	
<b><u>Q</u></b>	
Quality Stamps	12
Always Buying, Free Appraisals. World Wide & US Stamps & Covers & Collections.	
Queen City Coin & Stamp	32
New Issues, Topicals, US, British Commonwealth, France, World-Wide.	
<b><u>R</u></b>	
REW Stamps-Coins	22
Better US, and the World. Especially strong in high-valued France, Austria, Germany and US. We can supply unusual and esoteric needs.	
RKA Covers	63
First Day Covers, Naval & Air Mail Covers, Postal History.	
Rasdale Stamp Company	5 & 6
US & World Wide Stamps, Covers & Collections.	
Rising Sun Stamps	50
Japan, China, Postal History.	
Robert M. Sazama	33
World Wide & Topicals.	
Roy's Stamps	59 & 60
Canada & British Commonwealth, Stamps & Covers.	

# FLOREX 2011 Dealer List

## S

S. George Trager	4
US & Foreign First Day Covers, Postal History.	
St. Johns Stamps	36
World Wide Collections & Boxes, US.	
Stamp Center of Texas	26
World Wide Stamps & Postal History.	
Stamps Unlimited of GA, Inc.	40
Retail Stamp Shop, Mail Order, World Wide, Supplies.	
Stan Jameson	29
US & Foreign Stamps & Postal History. Auction Agent.	
SunCoast Stamp Company, Inc.	51, 52 & 53
US Stamps & Covers, World Wide Stamps & Covers, Confederate Stamps & Covers, Large Lots. Dime/Dollar.	

## T

The Classic Philatelist ~ Warren Manning	38
Classic US 1840-1940, Stamps, Postal History, Covers. Essays & Proofs.	
The Stamp Explorer	24 & 25
US, British, Commonwealth, World Wide Stamps Covers & Collections, Postcards, FDCs, Autographs, Zepp Covers, Air/Space Covers.	
The Stamp Professor	1
Classic US & Foreign.	
The Stamp-Tique, Inc.	37
Buying & Selling. US Classic Stamps & Postal History, Canada, Hong Kong, Australia, New Zealand.	

SEE US IN BOOTHS 7 & 8



## Bob & Marti's Stamps

U.S. & Foreign Stamps

Buying and Selling

BONDOQB@VERIZON.NET

### Specializing in U.S. Stamps

P.O. Box 1859 Oneco, FL 34264-1859 Phone 941-756-5908

SEE US IN BOOTH 35



## Douglas Weisz U.S. Covers

*Buying and Selling*

FLIGHTS: CAM, FAM,  
Catapult, Zeps, Lindbergh

QUALITY FIRST DAY  
COVERS

POSTAL HISTORY,  
NAVAL EVENTS,  
WWII PATRIOTICS,  
INAUGURALS

P.O. Box 1458-D, Mc Murray PA 15317  
773-914-4332 • E-Mail [weiszcovers@yahoo.com](mailto:weiszcovers@yahoo.com)

**WWW.DOUGLASWEISZ.COM**

Booth	Name	City	State	Phone	E-mail
1	The Stamp Professor	St. Augustine	FL	904-471-1549	TheStampProf@gmail.com
2	P. Schwender	Venice	FL	941-426-1482	psp68@aol.com
3	Frank Bachenheimer	Glenview	IL	847-480-1880	frankb@astampdealer4u.com
4	S. George Trager	Vero Beach	FL	772-567-7566	None
5-6	Rasdale Stamp Company	Westmont	IL	630-794-9900	info@rasdalestamps.com
7-8	Bob & Marti's Stamps	Oneco	FL	941-756-5908	bondob@verizon.net
9	Ed Petrik Stamps	Hernando	FL	352-726-2568	edpetrikstamps@tampabay.rr.com
10	Classic Stamps & Covers	Atlantic Beach	FL	904-249-1871	dickayf@aol.com
11	Mark-Lane Stamps	W.Haverstraw	NY	845-362-5330	RWS45@aol.com
12	Quality Stamps	Venice	FL	941-376-5689	qualitystamps@verizon.net
13	James F. Taff	Sacramento	CA	916-454-9007	None
14	Castle Rock Stamps	Miami	FL	786-340-8335	jorgecastillova@yahoo.com
15-16	FA Stamps	Shalimar	FL	850-651-2770	None
17	Michael	Titusville	FL	321-269-3377	emikew@mindspring.com
18	EdKen	Tampa	FL	813-948-8755	edken@tampabay.rr.com
19	H & S Rogg	Port Richey	FL	727-848-7697	h.rogg@verizon.net
20	Jacksonville Stamp & Coin	Jacksonville	FL	904-388-5351	PDearing@coj.net
21	Labron Harris	Glen Echo	MD	301-229-9385	labronharr@aol.com
22	REW Stamps-Coins	Augusta	NJ	973-875-3793	STAMPREW@aol.com
23	Blackjack Trading Company	Yorktown	VA	757-874-0279	chansel839@aol.com
24-25	The Stamp Explorer	Jacksonville	FL	904-396-9812	None
26	Stamp Center of Texas	Boerne	TX	210-240-4083	Klingsor88@hotmail.com
27	Jacksonville Stamp & Coin D/D	Jacksonville	FL	904-388-5351	PDearing@coj.net
28	Mountainside Stamps, Coins & Currency	Mountainside	NJ	908-232-0539	tjacks@verizon.net

<b>Booth</b>	<b>Name</b>	<b>City</b>	<b>State</b>	<b>Phone</b>	<b>E-mail</b>
29	Stan Jameson	St. Petersburg	FL	727-526-5203	empire65@tampabay.rr.com
30	Michael Rogers, Inc.	Winter Park	FL	407-644-2290	michael@michaelrogersinc.com
31	Earl T. Reeder	Kissimmee	FL	407-847-5901	etreeder@cfl.rr.com
32	Queen City Coin & Stamp	LaFayette	GA	706-638-2941	qccoinstamp@windstream.net
33	Robert M. Szazama	Marion	IL	618-992-0607	bsazama@4siwi.com
34	M.T.O. Stamps	Bradenton	FL	941-993-0919	mto.stamps@gte.net
35	Douglas Weisz U.S. Covers	McMurray	PA	773-914-4332	weiszcovers@yahoo.com
36	St. Johns Stamps	St. Augustine	FL	904-794-7725	stjstamp@bellsouth.net
37	The Stamp-Tique, Inc.	Shalimar	FL	850-651-3437	stamptique@earthlink.net
38	The Classic Philatelist ~ Warren Manning	Crossville	TN	760-724-6300	wvmanning@coml.net
39	Marshall's Stamps for Collectors	Bonita Springs	FL	239-691-1663	None
40	Stamps Unlimited of GA, Inc.	Atlanta	GA	404-688-9161	tonyroozen@yahoo.com
41	Browse House	Holly Hill	FL	386-672-1673	stamps@browsehouse.com
42-43	BEJCO of Florida, Inc.	Temple Terrace	FL	813-980-0734	arnsel@verizon.net
44-45-46	New England Stamp	East Naples	FL	239-732-8000	newengstmp@aol.com
47-48	A&R Stamp	Orlando	FL	407-859-9109	pfetting151@aol.com
49	Joanne's Stamps D/D	Marion	IL	618-992-0607	bsazama@4siwi.com
50	Rising Sun Stamps	Marshall's Creek	PA	570-421-6043	rising@ptd.net
51-52-53	SunCoast Stamp Company, Inc.	Sarasota	FL	941-921-9761	mail@suncoaststamp.com
54-55	Double J Stamps	Arlington Heights	IL	847-843-8700	Double_J_Stamps@yahoo.com
56	Martin Farber	Lady Lake	FL	352-753-4774	MFarberStamps@AOL.com
57-58	Court Street Stamp & Coin Shop	Clearwater	FL	727-442-5784	None
59-60	Roy's Stamps	St. Catharines, Ontario, Canada		905-934-8377	roystamp@cogeco.ca
61	Norman Hinds, Jr. Philatelics	Wabasso	FL	772-589-3741	nchl43@aol.com
62	PSAG, Inc.	Miami	FL	305-345-9864	info@psaginc.com
63	RKA Covers	Lafayette	IN	765-543-8274	RKCovers@yahoo.com

# EXHIBITION AREA

	63
	62
	61
	60
	59
	58
	57

	56	55	54	

	53	52	

	13	14	15	16	
	9	10	11	12	

	26	
	23	

	5	6	7	8	
	1	2	3	4	

	20	
	17	

Society      Post Office      Registration  
APS

Entr

A

Youth Area

51		

50	49	48	47	

46		
45		
44		

27	28	
24	25	

	38	39	40	
	35	36	37	

43		
42		
41		

21	22	
18	19	

	32	33	34	
	29	30	31	

Auction Area

ance

# Events Listing

Date	Access	Event	Time
<b>Friday December 2, 2011</b>	<b>Public</b>	<b>Show Opens</b>	<b>10:00am</b>
	Public	Youth Area Opens	10:00am
	Public	Exhibits Open	All day
	Public	Bucket of Stamps (Youth Area) material permitting	All day
	Public	Show Cachet & Cancel (Mercury 50 <sup>th</sup> Anniversary)	All day
	<b>Public</b>	<b>Show Closes</b>	<b>6:00pm</b>
<b>Saturday Part 1 December 3, 2011</b>	<b>Public</b>	<b>Show Opens</b>	<b>10:00am</b>
	Public	Youth Area Opens	10:00am
	Public	Exhibits Open	All day
	Public	Bucket of Stamps (Youth Area) material permitting	All day
	Public	Show Cachet & Cancel (Mercury 50 <sup>th</sup> Anniversary)	All day



# Events Listing

Date	Access	Event	Time
<b>Saturday Part 2 December 3, 2011</b>	Public	Florida Postal History Society -- Annual Meeting	Noon to 1:00pm
	Public	The Central Florida Chapter of the Germany Philatelic Society Meeting	1:30pm to 2:30pm
	Public	An Open Forum on Exhibiting sponsored by AAPE	1:30pm to 2:30pm
	Public	Judge's Critique	2:30pm to 4:00pm
	Judges & Exhibitors only	Awards Meet & Greet	4:00pm to 5:00pm
	<b>Public</b>	<b>Show Closes</b>	<b>5:00pm</b>
	Public	Auction Michael Rogers, Inc.	5:30pm
<b>Sunday December 4, 2011</b>	FSDA Dealers & invited guests only	Dealers' Breakfast	8:00am to 9:30am
	<b>Public</b>	<b>Show Opens</b>	<b>10:00am</b>
	Public	Youth Area Opens	10:00am
	Public	Exhibits Open	All day
	Public	Bucket of Stamps (Youth Area) material permitting	All day
	Public	Show Cachet & Cancel  (Mercury 50 <sup>th</sup> Anniversary)	All day
	Public	Grand Door Prize Drawing	2:30pm
	<b>Public</b>	<b>Show Closes</b>	<b>3:00pm</b>

SEE US IN BOOTH 62

# FLOREX 2011

The Florida State Stamp Show

December 2-4, 2011

The Central Florida Fairgrounds, Orlando, FL 32808

Expertizing US, Canada, Canadian Provinces,  
Canal Zone, Hawaii & Israel

3 Week Turnaround

Accepted By All Major Auction Firms

50+ Experts • Competitively Priced

## MAIL IN COUPON

Name \_\_\_\_\_

Address \_\_\_\_\_

City, State, Zip \_\_\_\_\_

Please send me info at the above address

Send to: PSAG, P.O. Box 56-2111, Miami, FL 33256

# www.psaginc.com

**Philatelic Stamp Authentication and Grading**

P.O. Box 56-2111 Miami, FL 33256 • Phone: 305.345.9864

E-Mail: info@psaginc.com



Cachet & 44¢ Stamp for the Mercury 50th Anniversary  
Available for purchase at FLOREX 2011, canceled each  
day of the show. Produced by the CFSC.

F  
L  
O  
R  
E  
X  
  
2  
0  
1  
1





Mercury  
50th  
Anniversary



Celebrates the 50th  
Anniversary of the Mercury Project

SEE US IN BOOTH 47 & 48

## **A & R Stamps**

P.O. Box 568334 Orlando, FL 32856

### **Ann & Phil Fettig**

**U.S. \* World Wide \* Stamps \* Covers**

**Box Lots \* Collections \* Extensive Topical Stock**

**Disney \* Maximum Cards \* Scouting**

**Dollar Table with Thousands of  
Items \$1 or Less**

### **FLOREX Show Special**

**Philatelic Library Disposal Including complete sets of  
Billig's Handbooks & Stamp Specialist, and Individual Titles  
by Brookman, Chase & Johl.**

**— Also Numerous Other Titles —**

# Thanks for Everything.....

A show can't be a show without the cooperation and support of the dealers who come from far and wide to sit on very hard chairs for three days – thank you!

To all the volunteers from the Central Florida Stamp Club (CFSC), your tireless hours of devotion and dedication to making sure the show runs smoothly is very much appreciated – thank you!

To MRI & Rasdale, FLOREX is deeply grateful for your monetary support of the workshops and meeting room venues – thank you!

To Robert Fisher, Exhibit Chairman - welcome -- the first time around is the worst -- it does get easier – thank you!

To Robert & Ann Dowrick, your dedication and time has made my life a lot easier in ways that I can not even begin to detail -- a hearty thank you is in order!

To everyone else, from the FSDA, CFSC, and APS, who I have not named specifically – your help in making this whole thing possible is greatly appreciated – thank you!

## SEE US IN BOOTH 28

### BUYING AND SELLING WORLDWIDE STAMPS AND COVERS AT OUR BOOTH MOUNTAINSIDE STAMPS

Post Office Box 1116, Mountainside, NJ 07092  
TEL: 908-232-0539 — EMAIL: [tjacks@verizon.net](mailto:tjacks@verizon.net)

**United States** - Single Stamps -- used and unused, Plate Blocks, Booklet Panes, and Booklets, BOB, Ducks, Revenues, Sheets, Stationery, FDC's, Possessions, and UN.

**Canada** -- Singles, Booklets, Plate Blocks, and Revenues.

**British Commonwealth** -- ALL Areas -- Great Britain, Australia, New Zealand and Bermuda.

**Western Europe** -- Single Stamps and Booklets from Germany, France, Italy, Vatican, Greece, Switzerland, Liechtenstein, Belgium, Netherlands, Luxembourg, Portugal, Spain and Scandinavia.

**Eastern Europe** -- Albania, Poland, and Russia.

**Asia-Japan, China, Hong Kong, Macao, Malaya.**

PLEASE OFFER QUALITY PHILATELIC MATERIAL FOR SALE.

**For more information**  
**[www.MountainSideStamps.com](http://www.MountainSideStamps.com)**



## THE BROWSE HOUSE

Stamps for the Collector

RANDY SAVEDOW  
KATHY TIGER-SAVEDOW  
386-672-1673

1335 RIDGEWOOD AVE.  
HOLLY HILL, FL 32117  
FAX 386-672-1709  
800-537-8864

[stamps@browsehouse.com](mailto:stamps@browsehouse.com)

SEE US IN  
BOOTH  
41

SEE US IN  
BOOTH  
1

## The Stamp Professor

US and Worldwide Stamps Bought, Sold & Appraised

### John A. Hunter

St. Augustine, Florida 32080

by appointment only  
904.471.1549  
904.315.5482

[TheStampProf@gmail.com](mailto:TheStampProf@gmail.com)

## Buy -- Sell -- Appraise

UNITED STATES - FOREIGN - COLLECTIONS - ACCUMULATIONS

### Ed Petrik

P.O. Box 512  
Hernando, FL 34442

PHONE: 352.726.2568  
E-mail: [EdPetrikStamps@tampabay.rr.com](mailto:EdPetrikStamps@tampabay.rr.com)

Member of: ANA, APS, FSDA

SEE US IN  
BOOTH  
9

SEE US IN  
BOOTH  
57 & 58



British Commonwealth -- Asia -- United States

F.S.D.A F.U.N. A.P.S

### Court Street Stamps and Coins

1250 Court Street Clearwater, Florida 33756  
Phone 727 | 442-5784

Carl Kish  
Owner

# NEW ENGLAND STAMP

## Super Sale!



ASDA, APS  
FSDA, AFDCS

EST. 1893



**20% OFF of our  
ENTIRE stock of US  
and worldwide stamps  
and covers.\***

**You can see us at  
booth 44, 45 & 46**

**\* except \$1 covers**

**Stop by and see our completely new stock  
of individually priced World-wide Covers!!**

On the web at [www.NewEnglandStamp.com](http://www.NewEnglandStamp.com)

4987 Tamiami Trail East  
Village Falls Professional Center  
Naples, Florida 34113

Phone (239) 732-8000  
FAX (239) 732-7701

eBay ID gary.nes

Robert J. Hausin

Gary A. Hausin

## CLASSIC STAMP & COVER CO.

### Philatelic Sales



- WORLD POSTAL HISTORY
- STAMP AND COVERS
- LOTS
- APPRAISAL-PURCHASE
- CONSULTATIONS
- SPECIALIZED AREAS

P.O. BOX 330635  
ATLANTIC BEACH, FL 32233  
TEL. (904) 249-1871

APS, GPS, FSDA

SEE US IN  
BOOTH  
10

SEE US IN  
BOOTH  
18



## EDKEN

*That Something Special!*  
First Day Covers & Stamps

Ed Lyons

P.O. Box 271401

Tampa, Florida 33688-1401  
Phone: 813.948.8755

EdKen@tampabay.rr.com

FSDA • APS



(727) 848-7697  
C# (727) 364-6897

## H & S ROGG

P.O. BOX 1076  
PORT RICHEY, FL 34673-1076  
Email: h.rogg@verizon.net

STAMPS  
APPRAISALS

COINS  
SUPPLIES

SEE US IN  
BOOTH  
19

SEE US IN  
BOOTH  
56

UNITED STATES  
FRANCE & COLONIES  
SCANDINAVIA  
WORLDWIDE



## MARTIN FARBER

P.O. BOX 579  
LADY LAKE, FL 32158  
(352) 753 4774  
MFarberStamps@aol.com

WE BUY AND  
SELL COLLECTIONS



SEE US IN  
BOOTH  
17

**United States Stamps**  
U.S. Mint, Used, Postal Cards, Postal Stationery  
Florida Postal History

---

BUY - SELL - TRADE

**Michael**  
Box 301  
Titusville, FL 32781  
Phone: 321.269.3377  
Email: cmikew@mindspring.com

Stamps Bought & Sold - Wholesale & Retail



**Earl T. Reeder**  
P.O. Box 421850  
Kissimmee, FL 34742-1850  
Telephone: 407.873.2008  
email: etreeder@cfl.rr.com




*serving the collector since 1978 Est. 1914*

SEE US IN  
BOOTH  
31

SEE US IN  
BOOTH  
34





**M.T.O. STAMPS**  
U.S. Stamps bought and sold  
MINT USED

SY & LUCY BRICKER

(941) 993-0919  
email: mto.stamps@gte.net

P.O. Box 20463  
Bradenton, FL 34204

Come see our large selection of material:

- PNC strips of 5
- Many used PNC # singles
- Revenues and back-of-book
- Early to modern used and unused U.S.



**Frank Bachenheimer**  
*Satisfying collectors like YOU since 1975*

U.S. STAMPS - REVENUES - POSSESSIONS

Box 230 GLENVIEW, IL 60025  
 (847) 480-1880 or FAX 480-7461  
 Email to: FrankB@AStampDealer4U.com

Visit us at [www.AStampDealer4U.com](http://www.AStampDealer4U.com)

APPAISALS - WANT LIST - BUYING




SEE US IN  
 BOOTH  
 3

SEE US IN  
 BOOTH  
 39

**APS** **MARSHALL'S**   
**STAMPS FOR COLLECTORS**

Established: 1991

 *Professional Philatelist*

BUY - SELL - TRADE

US & World Wide  
 Stamps & Covers  
 Postal History & Stationery

**MARSHALL T. KUEHN**  
 239.691.1663 (cell)

 **James F. Taff** 

P.O.Box 19549  
 Sacramento, CA 95819  
 Office: (916) 454-9007  
 Cell: (916) 709-0412  
 Fax: (916) 454-9009

Confederate States, German Areas,  
 United States (Especially B.O.B.), British Colonies,  
 French Colonies, Portuguese Colonies, Italian Colonies,  
 Worldwide

SEE US IN  
 BOOTH  
 13

SEE US IN  
 BOOTH  
 40



STAMPS UNLIMITED OF GA., INC.

100 PEACHTREE ST. SUITE 1460  
 ATLANTA, GEORGIA 30303 - PHONE (404) 688-9161  
 HOURS: (WHEN OPEN) MON-FRI 11-5. SAT 10-1  
 EMAIL: [tonyroozen@yahoo.com](mailto:tonyroozen@yahoo.com)  
 WEBSITE: [stampsunlimitedofga.com](http://stampsunlimitedofga.com)

TONY ROOZEN

# **Exhibitor Prospectus**

**FLOREX 2011 – The Florida State Stamp Show**

**A World Series of Philately Show**

**December 2, 3 & 4, 2011**

**Central Florida Fairgrounds & Exposition Park ---- Orlando, Florida**

## **Exhibitors:**

- 1. FLOREX 2011 is a WSP show open to all stamp collectors.**
- 2. Exhibits must be entirely the bona fide property of the exhibitor.**
- 3. Youth exhibitors must not have reached their 22nd birthday.**
- 4. Exhibitors' names will be used in the program, in the palmares, in press releases after the show, and in connection with the awards. To remain anonymous, exhibitors must advise the exhibit committee and furnish a pseudonym.**
- 5. Exhibits that have won the APS Champion of Champions or international grand prix, or three international large gold medals are ineligible to compete.**
- 6. The Grand Award winner is expected to enter the winning exhibit in the next World Series of Philately, competing for the Champion of Champions award.**

## **Exhibits:**

- 1. Adult exhibits have a one-frame minimum and a ten-frame maximum. (Jenkins/Ameripex type frames, each holding four rows of four 8 1/2 by 11 inch pages will be used.)**
- 2. If you wish to deviate from the standard frame layout (4 rows of 4 letter size pages) you must get the approval of the Exhibit Chair prior to submission of your application (call Robert Fisher 407.855.7202). The occasional use of double size or double row pages to display larger items is approved.**
- 3. A collector may submit more than one exhibit application, but no more than two exhibits will be accepted from the same person. Separate entry forms must be used for each exhibit. If the frames are over subscribed, only one exhibit may be accepted.**
- 4. The exhibit must be mounted on pages, numbered on the back in sequential order and each page enclosed in a transparent sheet protector, preferably closed on three sides.**
- 5. Withdrawal or failure to present an exhibit after accepted will result in forfeiture of any entry fee paid.**

## **Fees & Entry Procedure:**

- 1. The official entry form must be used. It has space for a description of the exhibit of no more than 25 words for inclusion in the program.**
- 2. The title and description on the official entry form will be used in the exhibition program. Do not exceed 25 words in the description. Please check your official entry form carefully before mailing it.**
- 3. The exhibit entry is \$10.00 per frame. However, the minimum fee for each exhibit is \$25.00. The charge on the first three frames from any youth exhibitor is \$1.00 each. The entry fee must be paid in full when you submit your official entry form, by check made payable to: FSDA/FLOREX. Any entry form that is submitted and postmarked before June 1, 2011 is entitled to a 10% discount on fees.**
- 4. Each exhibitor must also submit seven photocopies of the title page and seven copies**

of a one or two page summary synopsis outline of the exhibit. This material may be sent at the time of application or up to September 1, 2011. The title page and synopsis for your exhibit will be distributed to the jury in advance of the show to assist them in preparing to evaluate your exhibit.

5. The deadline for entries is September 1, 2011. Early application is important because the Exhibition Committee may close entries without further notice when frames are filled. The Exhibition Committee can, at its discretion, reject any exhibit for any reason. If the exhibit is rejected, the entry fee will be refunded in full.

6. All exhibitors will be notified whether their exhibit has been accepted ASAP after September 1, 2011.

7. Entry fees will not be refunded for exhibits withdrawn after September 1, 2011, or not delivered to the Exhibition.

### **Judging & Awards:**

1. A jury of at least four APS-qualified judges will be appointed by the Exhibition Committee to judge the exhibits.

2. Judging will be on an open basis, and the judges will judge each exhibit on its own merit set forth in the latest edition of the APS Manual of Philatelic Judging, which is available for purchase from the APS. Exhibitors should familiarize themselves with the rules in order to achieve the highest award. Decisions of the judges are final.

3. Other special and society awards will also be given to deserving exhibits at the discretion of the jury.

4. All awards will be announced at an awards ceremony the afternoon of Saturday, December 3, 2011.

5. The following classes and divisions have been established:

**a. General Class:**

i. Postal Division

ii. Revenue Division

iii. Thematic Division

iv. Display Division

v. Single Frame Class

vi. Youth Class

**b. Single Frame:**

i. Postal

ii. Cinderella

iii. Display

iv. Illustrated

v. Thematic

**c. Youth:**

i. Postal

ii. Thematic

**d. Noncompetitive**

6. The following awards will be given to each qualified exhibit, based on the individual merit of that exhibit:

Gold, Vermeil, Silver, Silver Bronze, Bronze or Certificate. There is no limit on the number of any one award that can be given in the exhibition. Grand and Reserve Grand awards will be given to the top General Class exhibits. Awards will also be given to the best Single Frame and the best Youth Class exhibit.

**7. You should submit seven copies of a preliminary Title Page, along with seven copies of a synopsis of your exhibit, prior to September 1, 2011, if you want them included in the Judge's Handbook. Your preliminary Title Page may be changed on the final exhibit, and neither the preliminary Title Page nor the synopsis will be considered by the judges in making their decisions.**

**Logistics:**

- 1. Exhibits must be sent prepaid and with return postage or payment. They will be returned promptly after the closing of the show by the method requested by the owner. If no method is specified, your exhibit will be returned via Express Mail at a minimum fee of \$18.00 per 16 pages or actual cost. We highly recommend the use of fully insured Express Mail. Please package your exhibit for shipping so that the packaging materials can be reused for return.**
- 2. Personally delivered exhibits will be received by the Exhibition Committee before the show between the hours of 4:00 pm and 6:00 pm on Thursday, December 1, 2011.**
- 3. No exhibit may be removed prior to the closing of the show at 3:00 pm Sunday, December 4, 2011. The exhibit may be removed thereafter only when signed for by the exhibitor or duly authorized representative and when checked out and released by the Exhibition Committee. The removal of exhibits will be carefully supervised by approved staff and will not be rushed so that safety and security are ensured.**
- 4. Exhibitors must provide their own insurance. All reasonable care will be taken to ensure the safety of the exhibits, including 24-hour professional security guards. The exhibit is entered at the risk of the exhibitor. No responsibility or liability shall be attached to FLOREX 2010, its Committee members, sponsoring societies, or any of their employees, officers, volunteers or representatives for any damage or loss for any cause or reason.**

**Summation:**

- 1. The Exhibition Committee will have complete discretion in matters that may arise concerning the Exhibition and not provided for in this prospectus.**
- 2. Signing of the entry form denotes acceptance of all conditions set forth herein.**
- 3. Any and all disputes are the sole responsibility of the Exhibits Chair to resolve.**

**FLOREX 2011 Judges**

APS-accredited judging will be chaired by Stephen Reinhard (NY).

Rounding out the remaining four jury positions are:

Dr. Edwin J. Andrews (PA)

Alfred Frohlich (FL)

James R. Pullin (FL)

Jay B. Stotts (TX)

with William Fort (Apprentice) (TX)

The Judges' Critique is scheduled for 2:30 pm Saturday, December 3, 2011.  
The Awards Presentation and reception for exhibitors and judges will begin at 4:00 pm in the meeting area.

G  
O  
L  
D

2.00 inch  
medals



V  
E  
R  
M  
E  
I  
L

These medals represent the beginning of a new era for **FLOREX**.

**FLOREX 2011** would like to thank all those exhibitors who have participated in shows of years past ---- and all those to come!



Silver



Silver-Bronze



Bronze

1.75 inch  
medals

F  
L  
O  
R  
E  
X  
S  
T  
A  
M  
P  
S  
H  
O  
W

## Future FLOREX Dates

2012 November 30, December 1 & 2

2013 December 6, 7 & 8

2014 December 5, 6 & 7

2015 December 4, 5 & 6

2016 December 2, 3 & 4

.COM

2017 December 1, 2 & 3

# Exhibit Frame Information

Frames	Exhibitor	Subject
1-10	Jeffrey N. Shapiro	The Prexies At Work
11-20	Hideo R. Yokota	U.S. Air Mail Special Delivery Issues of 1934-1936
21-30	Alfred F. Kugel	The Postal History of Montenegro 1874 - 1922
31-35	Dr Richard Mallow	First Issue of the Polish Peoples Republic
36-40	Phillip J. Stager	Bamboo - The story of Bamboo and its many uses by man.
41	Bill Schultz	One Dollar Rate (4X) 1796 - 1849
42-50	Brian Callan	Graf Zeppelin 127 - The Postal Globetrotter
51-57	Octavio Cabrera	Errors, Freaks & Oddities on Cuban Postal Stationery of the Castro Era
58-60	David S. Durbin	Philippine Philately Under Japanese Occupation
61-63	C. Robert Blizzard	Overprint Varieties of St. Pierre & Miquelon
64-70	Brian Callan	A History of Modern Chemists and Chemistry
71	Brian Callan	New York to North Pole by Submarine
72-79	Karl Zurn	Walter Crosby Classic Cachet Maker
80	Kees Adema	The Effect of World War II on Mail To and From Holland
81	James P. Edmunds	U. S. Armored Cruisers
82-89	Santiago Cruz	Columbia - The Department of Antioquia 1886-1904
90	Nicholas M. Kirke	New York Foreign Mail Fancy Cancels 1873 - 1876
91-95	Adam S. Mangold	Building a Nation.... one state at a time.
96-100	James P Edmunds	U. S. Battleships
101-108	Edward Grabowski	Postal History of the French Colonial Allegorical Group Type
109	Elizabeth M. Hisey	Roast Quail - From Field to Plate

# Exhibit Frame Information

Frames	Exhibitor	Subject
110	Alfred F. Kugel	The Washington 2 cent Definitive of 1919
111-118	Paul C. Hager	The Pashupati Era of Nepal
119	James Archbold	Christmas as Shown on FDC Cachets
120	Charles Blickle	Potpourri
121-128	Eric A. Glohr	Hawaiian Postal Cards and Envelopes: Kingdom, Provisional Government, and Republic Issues
129-135	Robert W. Hisey	The Christmas Seals of Finland
136-142	Joseph F. Frasch	The History of the Louisiana Purchase
143-150	Nicholas M. Kirke	The Progression of the New York Foreign Mail Cancellation 1870 - 1878
151-160	Matthew W. Kewriga	US 2 cent Jackson Regular Issue, 1870-79
161-170	Carlos Vergara	Cinderellas: Non-Postal Stamps, Labels and Seals of Chile - An Overview
171-176	Rocco Caponi	Domestic Usages of the 2 cent Circular Die of 1915
177	Dieter Bortfeldt	By Chasqui
178	Eliot A. Landau	The 1909 Lincoln Commemoratives





FloridaStampShows.com

The source for all show  
related information for the  
state of Florida



NORMAN C. HINDS, JR. PHILATELICS



P.O. Box 700273  
Wabasso, FL 32970

Phone: 772-589-3741  
Email: nch1436@aol.com

NORMAN C. HINDS, JR.  
eBay store: [stores.ebay.com/  
Norman-Hinds-Philatelics](http://stores.ebay.com/Norman-Hinds-Philatelics)  
Postage Stamps  
Bought and Sold  
Member FSDA, USPCS, GPS, GCCG



APS # 083032

SEE US IN  
BOOTH  
61

SEE US IN  
BOOTHS  
24 & 25



Pat Campbell  
APS, FSDA, SDAG, NSDA

THE STAMP EXPLORER

Buy • Sell • Trade • U.S. • British • Worldwide

1232 Nicholson Rd.  
Jacksonville, Florida 32207  
(904) 396-9812



*The Stamp-Tique, Inc.*

Buying & Selling  
US, Canada, Hong Kong, Australia, NZ

Glenn & Rowena Hanle

17 Lake Lorraine Circle  
Shalimar, FL 32579-1617  
Phone: 850-651-3437 FAX: 850-651-3406  
Email: [stamptique@earthlink.net](mailto:stamptique@earthlink.net)  
Website: [www.stamptique.com](http://www.stamptique.com)  
Member: APS, ASDA, USPCS, USSS, FSDA, SDAG

SEE US IN  
BOOTH  
37



**The Florida Precancel Club**  
Presents the Southeast's Largest  
**Precancel Bourse and Perfins Exchange**  
February 8 thru 11, 2012



Holiday Inn Express & Suites  
4750 North Dale Mabry Highway  
Tampa FL 33614-6509  
For hotel reservations call (813) 877-6061 and  
Request "Florida Precancel" rate of \$89.99.

Additional meeting information from  
Jerry Hejduk at (352) 326-2117 or write/email  
PO Box 490450, Leesburg FL 34749-0450

SEE US IN BOOTHS 42 & 43



**BEJJCO**

**of Florida, Inc.**

Arnold H. Selengut



**U.S. & WORLDWIDE**

*Stamps and Covers*

*FDCs, Flights, U.S. & Foreign Postal History*

**All Continents, All Countries**

From 20¢ to \$100s, Mint and Used

*Let us help you fill those empty spaces.*

**See us at a Stamp Show, or send us your Want List.**

E-mail: [arnsel@verizon.net](mailto:arnsel@verizon.net)

P. O. Box 16681 Temple Terrace, FL 33687-6681 (813) 980-0734

# **Welcome to Michael Rogers Public Auction #126**

Being held in conjunction with

FLOREX -- Saturday 5:30pm

## **CHINA, CHINA, CHINA**

Over 200 lots of Imperial to PRC issues with an exceptional range of Large Dragons; the highlight has to be the 1884 China/Japan mixed franking cover to U.S. bearing the 1 candarin and 5 candarin Large Dragons with Japan 10 Koban blue all on front of entire cover — a true showpiece. Later has ROC 1939-45 Die Proofs ex American Bank Note Co. archives, rarely seen.

PRC Liberated has the North China 1938 White Full Sun set of 2 on brown paper (Yang NC 3-4) and the set of 3 on white paper. PRC Unified begins with 1949 \$200 Farmers Die Proof and the 1950 \$10,000 Farmers proof ovptd. 'Specimen'. All the popular sets and Souvenir Sheets are here including perf. and imperforate Mei Lan Fang sets NH plus the Souvenir Sheet NH (Sc. 620-627, 628). 1967 Thoughts of Mao strips NH (Yang W1) plus other 1967-68 sets all VF NH with duplication (3 sets of Mao's Poems-Sc. 967-80/Yang W7). Later with 1975-79 Year sets in blocks or strips of 4, NH; the ever popular Monkey New Year issue, Sc. 1586/Yang T46 ( 2 singles and a VF NH corner block of 4), much more!

Japan with collections, booklets, full sheets, also has a beautiful 1907 ¥ 3.50 booklet, VF NH (JSCA B2), and the 1934 Communications Souvenir Sheet VF NH (Sc. C8). Korea, early Macau from 1888 mint, Mongolia collection, Ryukyu with 1958 2c., 4c. 'Mihon's' VF NH (Sc. 46TC,48TC) among other 'goodies'.

Worldwide contains a large selection of 1 country collections, a range of die proofs ex American Bank Note Co. and Security Banknote Co. archives with strength in issues from Cuba including a rare 1914 presentation album. You'll find specialized France with imperforate proofs and booklet pane sheets plus valuable collections of French Colonies offered by regions; scarce Germany with the 1920 1¼ M. Germania with quatrefoil watermark, 1920 15 Pfg. Lilac Brown Official, imperforate and 1948 'Dove' high values overprinted 'Berlin' in black, each showing the rare 'broken R in Berlin variety'.

Exceptional Liberia for the specialist includes a 7 volume collection of the 1860-1969 issues and outstanding postal history from the 1898-1928 period from a collection assembled years ago. More Mexico postal history, pre-stamp to 1915; Nicaragua with rare 1931 Earthquake provisional overprints, Zelaya-Bluefields 1899-1912 postal history, can't name it all.

United States has 23 collections to start with, including a large First Day Cover holding in albums, cartons, broken into manageable lots. Also a large collection of New Mexico Territorial postal history offered intact (over 450 pieces). A stellar photo of the USS Akron in a 26" x 20" frame made from pieces of Duralumin used in the girder construction of the airship, signed by the famous Life photographer Margaret Bourke-White. Of course we'll end with 48 lots of cartons and boxes of Worldwide material so everyone will find something of interest.

**Saturday, Dec. 3rd • 5:30 pm**  
**FLOREX OFFICIAL AUCTIONEER**  
**ORLANDO, FLORIDA**  
**Hundreds of Lots of U.S., Worldwide**  
**and China/Asia**

**HIGHLIGHTS INCLUDE:**

- 1884 China/Japan Mixed Franking Cover
- PRC NH sets include perf & imperf Mei Lan Fang sets and popular Souvenir Sheets
- Specialized Liberia Postal History 1898-1928
- Nicaragua early Blue Fields Postal History
  - Worldwide Die Proofs
- One country collections and large lots

**PLUS Stamps and Collections of the World**

# Michael Rogers Inc.

415 S Orlando Ave. Suite 4-1  
Winter Park FL 32789-3683  
USA

Office: (407) 644-2290  
Toll Free: 1-800-843-3751

E-Mail: [stamps@michaelrogersinc.com](mailto:stamps@michaelrogersinc.com)  
[www.michaelrogersinc.com](http://www.michaelrogersinc.com)



Member of over thirty professional and collector societies including the Florida Stamp Dealer Association, ASDA, APS, China Stamp Society, and others.



# BLACKJACK TRADING COMPANY

We are here to buy regardless of the size of your estate.  
We will buy ALL your stamps.

Please contact Chuck Hanselmann at:

757.874.0279

- or -

[chansel839@aol.com](mailto:chansel839@aol.com)

SEE US IN  
BOOTH  
23

