

## Rules and Regulations

1. This exhibition is a WSP show open to all collectors regardless of philatelic affiliation who conform to the rules in this prospectus. Exhibits at time of entry that have won the APS Champion of Champions, an international grand prix, or three international large gold medals are ineligible. Youth exhibitors must not have reached their 22nd birthday. All material exhibited must be owned by the person(s) whose name(s) appears on the official entry form. Exhibits with dual ownership are not eligible unless the two individuals are husband and wife or parent and child. Exhibitors' names will be used in the program, in the palmars, in press releases after the show, and in connection with the awards. To remain anonymous, exhibitors must advise the exhibit committee and furnish a pseudonym.
2. Exhibits that have been purchased intact may not be exhibited for a period of two years from the date of purchase unless the exhibit is substantially altered by the addition of new material or new text. The Committee on the Accreditation of National Exhibitions and Judges will determine whether or not a particular exhibit is affected by this regulation.
3. **An entry form for each exhibit, along with the entry fee payable by check (made out to FSDA), must be mailed to: FLOREX, Robert J. Fisher, 621 Glen Grove Lane, Edgewood, FL, 32839 -- arriving by October 1, 2018.** At most one multi-frame and one single-frame exhibits may be entered in the open competition by any one exhibitor. Exhibits entered in the Single Frame C of C do not count towards this limit (see 4 below). All fees paid will be refunded in case of non-acceptance but otherwise are non-refundable except as noted in #12 below.
4. Exhibits may be entered in any one of four classes: General, Single Frame, Youth, and Noncompetitive. The General Class is composed of the Postal, Revenue, Thematic, Display, Single Frame, and Youth. The Single Frame Class is composed of the Postal, Cinderella, Display, Illustrated, and Thematic. The Youth Class is composed of the Postal and Thematic. The Noncompetitive Class stands on its own.
5. There will be up to 200 total frames at the show. Noncompetitive exhibits will only be accepted if they add significantly to the show. Examples include famous or infrequently seen rarities, innovative exhibits including those that will not fit in standard frames, and exhibits related to the theme or location of the show.
6. Exhibits are generally accepted in the order of receipt of completed entry forms and payment, however, FLOREX reserves the right to refuse any exhibit. Criteria that may be considered in the acceptance of exhibits include APS member status, membership in Societies participating in the show, service on the local committee or as a volunteer, planned attendance of the show and or awards functions, submission of title or synopsis pages, and whether or not the exhibit has been previously shown at FLOREX 2017.
7. A jury of at least five APS-accredited judges will be appointed by the Exhibition Committee to judge the exhibits. The judges will judge each exhibit on its own merit set forth in the 6th edition of the APS Manual of Philatelic Judging, which is available for purchase from the APS. Judging will be on an open basis. Exhibitors should familiarize themselves with the rules in order to achieve the highest award. Decisions of the judges are final. Other special and society awards will also be given to deserving exhibits at the discretion of the jury. All awards will be announced at an awards ceremony the afternoon of Saturday, December 1, 2018.
8. The following awards will be given to each qualified exhibit, based on the individual merit of that exhibit: Large Gold, Gold, Large Vermeil, Vermeil, Large Silver, Silver, Silver Bronze, Bronze or Certificate. There is no limit on the number of any one award that can be given in the exhibition. Grand and Reserve Grand awards will be given to the top General Class exhibits. Awards will also be given to the best Single Frame and the best Youth Class exhibit.
9. General, Single Frame, and Youth exhibits will be judged based on four levels of awards. Exhibits in these classes will receive written feedback. A Grand Award and a Reserve Grand Award will be given to the best exhibits in the General and Single Frame class. Special awards may be given to the best exhibit in each division with five or more entries. Additional Society and Special awards may be presented. The Grand Award winner is expected to enter the winning exhibit in the next World Series of Philately, competing for the Champion of Champions award.
10. Exhibitors who have an exhibiting age of 21 years of or less on January 1, 2018, may enter the Youth Class. Frames for youth exhibits are offered at \$1.00 per frame.
11. Adult exhibits have a one-frame minimum and a ten-frame maximum. (Jenkins/Ameripex type frames, each holding four rows of four 8 1/2 by 11 inch pages will be used.) If you wish to deviate from the standard frame layout (4 rows of 4 letter size pages) you must get the approval of the Exhibit Chair prior to submission of your application (call **Robert J. Fisher 407.855.7202**). The occasional use of double size or double row pages to display larger items is approved. Each album page must be inserted into a transparent protective sleeve, envelope or covering and should bear progressive numbers, preferably on the reverse side, to indicate the order in which the pages are to be mounted, preferably closed on three sides. The FLOREX Exhibit Chair should be consulted in advance regarding any exhibits with large or odd-sized pages that will not be mounted and dismounted by the owner or a designated agent.
12. The Official Entry Form must be used. It has space for a description of the exhibit of no more than 25 words for inclusion in the program. The title and description on the Official Entry Form will be used in the exhibition program. Do not exceed 25 words in the description. Please check your Official Entry Form **carefully** before mailing it. If the frames are over subscribed, only one exhibit may be accepted. Each exhibitor must also submit seven photocopies of the title page and seven copies of a one or two page summary synopsis outline of the exhibit. This material may be sent at the time of application or up to October 1, 2018. The title page and synopsis for your exhibit will be distributed to the jury in advance of the show to assist them in preparing to evaluate your exhibit. A collector may submit more than one exhibit application, but the option to accept or decline the additional exhibits, is up to the Exhibition Committee. Separate entry forms must be used for each exhibit. The exhibit entry is \$10.00 per frame. However, the minimum fee for each exhibit is \$25.00. **The charge**

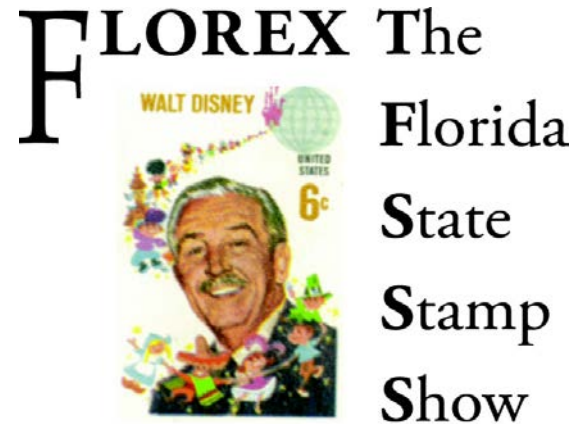
on the first three frames from any youth exhibitor is \$1.00 each. The entry fee must be paid in full when you submit your Official Entry Form, by check made payable to: FSDA. Any entry form that is submitted and postmarked before August 15, 2018 is entitled to a 10% discount on fees. The deadline for entries is October 1, 2018. Early application is important because the Exhibition Committee may close entries without further notice when frames are filled. The Exhibition Committee can, at its discretion, reject any exhibit for any reason. If the exhibit is rejected, the entry fee will be refunded in full. All exhibitors will be notified whether their exhibit has been accepted ASAP after October 1, 2018. Entry fees will not be refunded for exhibits withdrawn after October 1, 2018, or not delivered to the Exhibition Chair. In the event that an exhibit is rejected for violating this requirement, all entry fees, less an administrative fee of \$15, will be refunded. Withdrawal or failure to present an exhibit after accepted will result in forfeiture of any entry fee paid.

13. Personally delivered exhibits will be received by the Exhibition Committee before the show between the hours of 4:00 pm and 6:00 pm on Thursday, November 29, 2018.
14. **No exhibit may be removed prior to the closing of the show at 3:00 pm Sunday, December 2, 2018.** The exhibit may be removed thereafter only when signed for by the exhibitor or duly-authorized representative and when checked out and released by the Exhibition Committee. The removal of exhibits will be carefully supervised by approved staff and will not be rushed so that safety and security are ensured.
15. Exhibits must be sent prepaid and with return postage or payment. They will be returned promptly after the closing of the show by the method requested by the owner. If no method is specified, your exhibit will be returned via Express Mail at a minimum fee of \$23.75 per 16 pages or actual cost. We highly recommend the use of fully insured Express Mail. **Please package your exhibit for shipping so that the packaging materials can be reused for return.**
16. **Exhibitors must provide their own insurance.** All reasonable care will be taken to ensure the safety of the exhibits, including 24-hour professional security guards. The exhibit is entered at the risk of the exhibitor. No responsibility or liability shall be attached to the Florida Stamp Dealers' Association, FLOREX 2018, its Committee members, sponsoring societies, or any of their employees, officers, volunteers or representatives for any damage or loss for any cause or reason.
17. The Exhibition Committee will have complete discretion in matters that may arise concerning the Exhibition and not provided for in this prospectus. I agree that the decision of the judges shall be final, and hereby release and agree to hold harmless the judges and the American Philatelic Society, its officers, directors, employees, and representatives from any damages, including by not limited to damages to my reputation or that of my exhibit, suffered or incurred as a result of the judging. Signing of the Entry Form denotes acceptance of all conditions set forth herein. Any and all disputes are the sole responsibility of the Exhibits Chair to resolve.

**Jury**

Mr. Stephen Reinhard (Chief)	
Ed Kroft, QC FRPSC	Mr. Ken Martin
Mr. Jerry H. Miller	Mr. Stephen Washburn

# Exhibition Prospectus



## FLOREX 2018 The Florida State Stamp Show A World Series of Philately Show

Central Florida Fairgrounds & Exhibition Park  
Orlando, Florida  
November 30, December 1 & 2